

esade

Summer School

2025 edition

Esade and Università Cattolica del Sacro Cuore

Do Good. Do Better.

esade

Welcome to Esade



New tagline, new image

Esade was founded in 1958 and began from a need to **collectively drive change** and transform the country, its economy, and its companies. This could only be achieved by investing in its most important asset - **its people**.

‘Do Good. Do Better’

Is our tagline and promise to build fairer and more prosperous societies through a focus on **innovation** and **social commitment**.

Do
Good.
Do
Better.

Our Mission

Education and Research:



Education

Provide a holistic education to individuals for them to become competent and socially responsible professionals.



Research

Generate knowledge to help to improve organizations and society.



Social Debate

Contribute to social debate and help to build free, prosperous, fairer and socially and environmentally sustainable societies.

Our Values



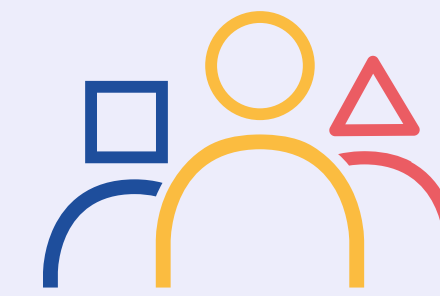
Integrity

Instil integrity in all our academic and professional activities. This means behaving with a commitment to fundamental values such as rigour and hard work, honesty, a critical spirit, equity and a sense of responsibility, even in difficult circumstances.



Sensitivity

Respect colleagues and people, including ourselves, and being sensitive to others' concrete circumstances. This implies respecting everyone's dignity and being able to support and help others when they need it and working together to build a fairer and more humane world.



Diversity

Positively value diversity and learn from differences between people, ideas and situations. This means understanding that differences based on gender, ethnicity, language, culture, sexual orientation, religion, physical traits or any other differences are opportunities to learn and enrich ourselves with different visions about people, the world and ourselves.

esade

Why choose esade?



International Accreditations

Esade is the 1st Business School in Spain, and one of only a handful in Europe, to be awarded the prestigious **'triple crown'** of the world's most important accreditations: AMBA, AACSB, EQUIS. No more than 1% of Business Schools have the triple crown.

In 2022, our positive social impact gained **BSIS** label.

Our commitment to help build better societies has led us to undergo our first Business School Impact System (BSIS) assessment, a tool developed by EFMD Global.



Association of MBAs
(AMBA)

2019-2024
2014-2019
2009-2014
2004-2009
1999-2004



Association to Advance Collegiate
Schools of Business
(AACSB International)

2021-2026
2016-2021
2011-2016
2001-2011



EFMD Quality Improvement
System (EQUIS)

2018-2023
2013-2018
2008-2013
2003-2008



Business School Impact System
(BSIS)

2022

International Reputation

#1

Private University in
Spain for a Bachelor in
Management and a
Bachelor in Law
(El Mundo)

#1

International Experience
Worldwide
(The Economist)

#1

New Skills and Learning
in Europe
(Financial Times)

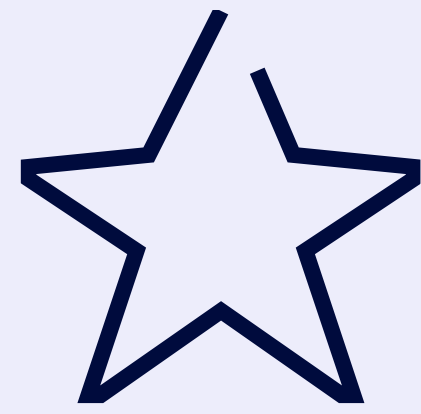
#2

Student Satisfaction
(Bloomberg
Businessweek)

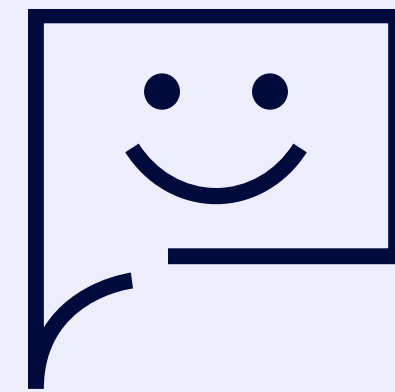


esade

Unique Curriculum



**Multidisciplinary training
and management skills**



**Learning by Doing
Methodology**



**Internationality
+100 nationalities on
campus**



esade

Encouraging meaningful change since 1958

Barcelona...



The Sea



Great food



Modernism,
architecture and
culture



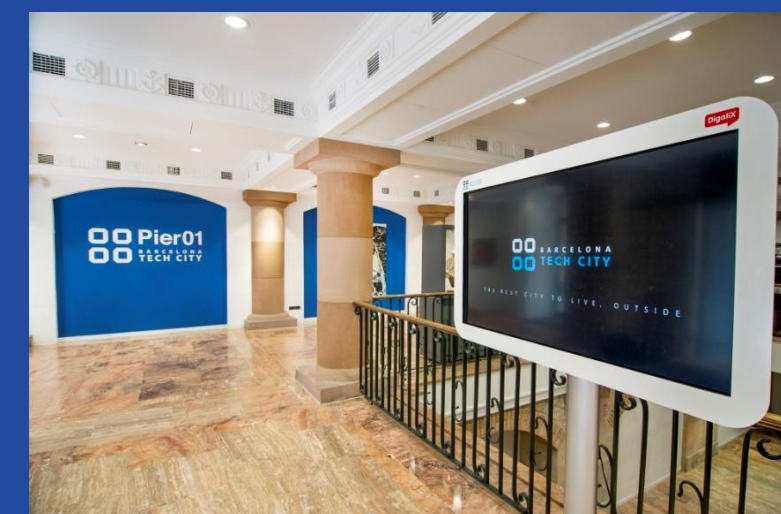
Mountains
and
Natural Park



Multiculturalism



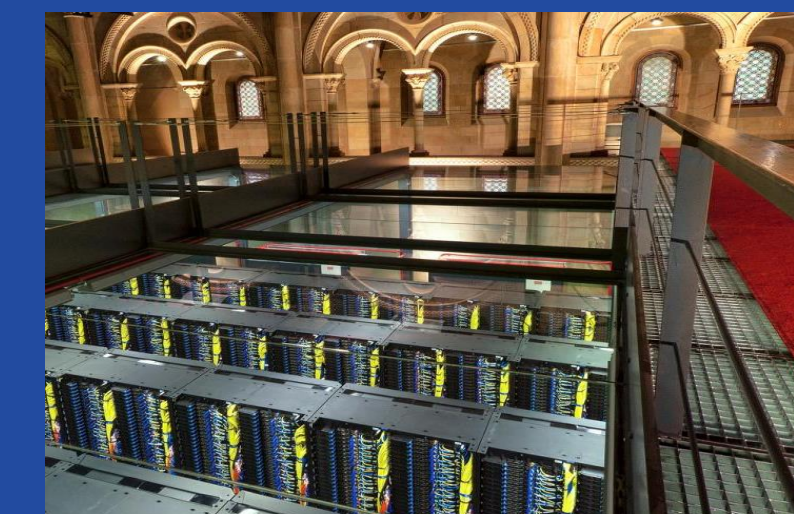
Barcelona Science
Park



Barcelona
Tech City



22@



Barcelona
Supercomputing
Centre

esade

Why Barcelona?



The Sea



esade

Why Barcelona?



Great food



esade

Why Barcelona?



Modernism, architecture and culture



esade

Why Barcelona?



Multiculturalism



esade

Why Barcelona?



Barcelona Science Park



esade

International Summer Program



International Summer Program

2, 4, or 6

Weeks



100%
in English



Company
Visits



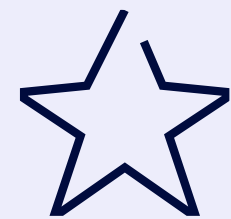
On campus

41

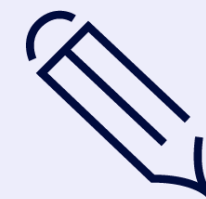
Nationalities

76%

International
Students



**Connect with
entrepreneurs and
companies**



**Explore your
business strengths
and abilities**



**Discover how you
feel in our
university
environment**



**Take part in team
activities**



**Develop a global
mindset and vision**

At one of the +80
universities in the
world

International Summer Program

When?

June edition

1st period – June 16th to 27th

Fast Track!

2nd period – June 30th to 11th

3rd period – July 14th to 25th

July edition

Tracks

A. International Management:

- A. Intl. Finance
- B. Creating Successful Marketing strategies

B. Entrepreneurship & Management:

- A. Global Entrepreneurship
- B. Social Entrepreneurship

C. Innovation in Management

- A. Design thinking & prototyping
- B. Digital disruption & Big Data

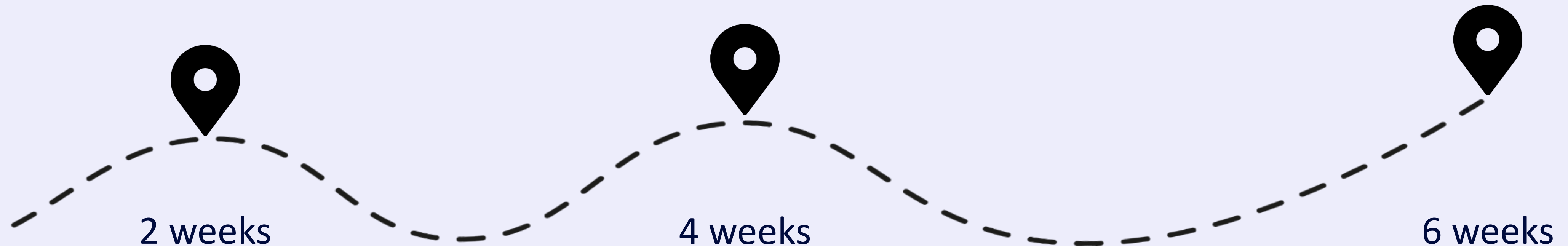
esade

Get the full Summer Experience

A. International Management

B. Entrepreneurship & Management

C. Innovative Management



esade

Electives

Only available in periods 2nd and 3rd (July edition)

On 2nd period:

- Agile Management
- Rhetoric for Persuasion & Public Speaking
- Digital Marketing and E-Commerce

On 3rd period:

- Digital Disruption
- Investing in a Disruptive World
- Negotiation, Communication & Conflict Management

***Elective courses will be confirmed in April 2025**



esade

Example Schedule

Week 1&2 JULY

	Monday	Tuesday	Wednesday	Thursday	Friday
9:30 - 11:30	INTERNATIONAL MARKETING	INTERNATIONAL MARKETING	INTERNATIONAL MARKETING	INTERNATIONAL MARKETING	INTERNATIONAL MARKETING
	GLOBAL ENTREPRENEURSHIP	GLOBAL ENTREPRENEURSHIP	GLOBAL ENTREPRENEURSHIP	GLOBAL ENTREPRENEURSHIP	GLOBAL ENTREPRENEURSHIP
	DESIGN THINKING	DESIGN THINKING	DESIGN THINKING	DESIGN THINKING	DESIGN THINKING
11:30 - 12:00	BREAK				
12:00 - 14:00	ELECTIVE	ELECTIVE	ELECTIVE	ELECTIVE	ELECTIVE
14:00 - 15:00	LUNCH				
15:00 - 17:00	Free time	Free time	COMPANY VISIT	Free time	Free time

Week 3&4 JULY

	Monday	Tuesday	Wednesday	Thursday	Friday
9:30 - 11:30	INTERNATIONAL FINANCE	INTERNATIONAL FINANCE	INTERNATIONAL FINANCE	INTERNATIONAL FINANCE	INTERNATIONAL FINANCE
	SOCIAL ENTREPRENEURSHIP	SOCIAL ENTREPRENEURSHIP	SOCIAL ENTREPRENEURSHIP	SOCIAL ENTREPRENEURSHIP	SOCIAL ENTREPRENEURSHIP
	DIGITAL DISRUPTION	DIGITAL DISRUPTION	DIGITAL DISRUPTION	DIGITAL DISRUPTION	DIGITAL DISRUPTION
11:30 - 12:00	BREAK				
12:00 - 14:00	ELECTIVE	ELECTIVE	ELECTIVE	ELECTIVE	ELECTIVE
14:00 - 15:00	LUNCH				
15:00 - 17:00	Free time	Free time	COMPANY VISIT	Free time	Free time

esade

Why to choose our Summer program?



esade

Our campus in Sant Cugat

The Rambla of Innovation

- 1 Decision Lab
- 2 Egarage
- 3 EWorks
- 4 Fusion Point
- 5 Fab Lab

ESADE

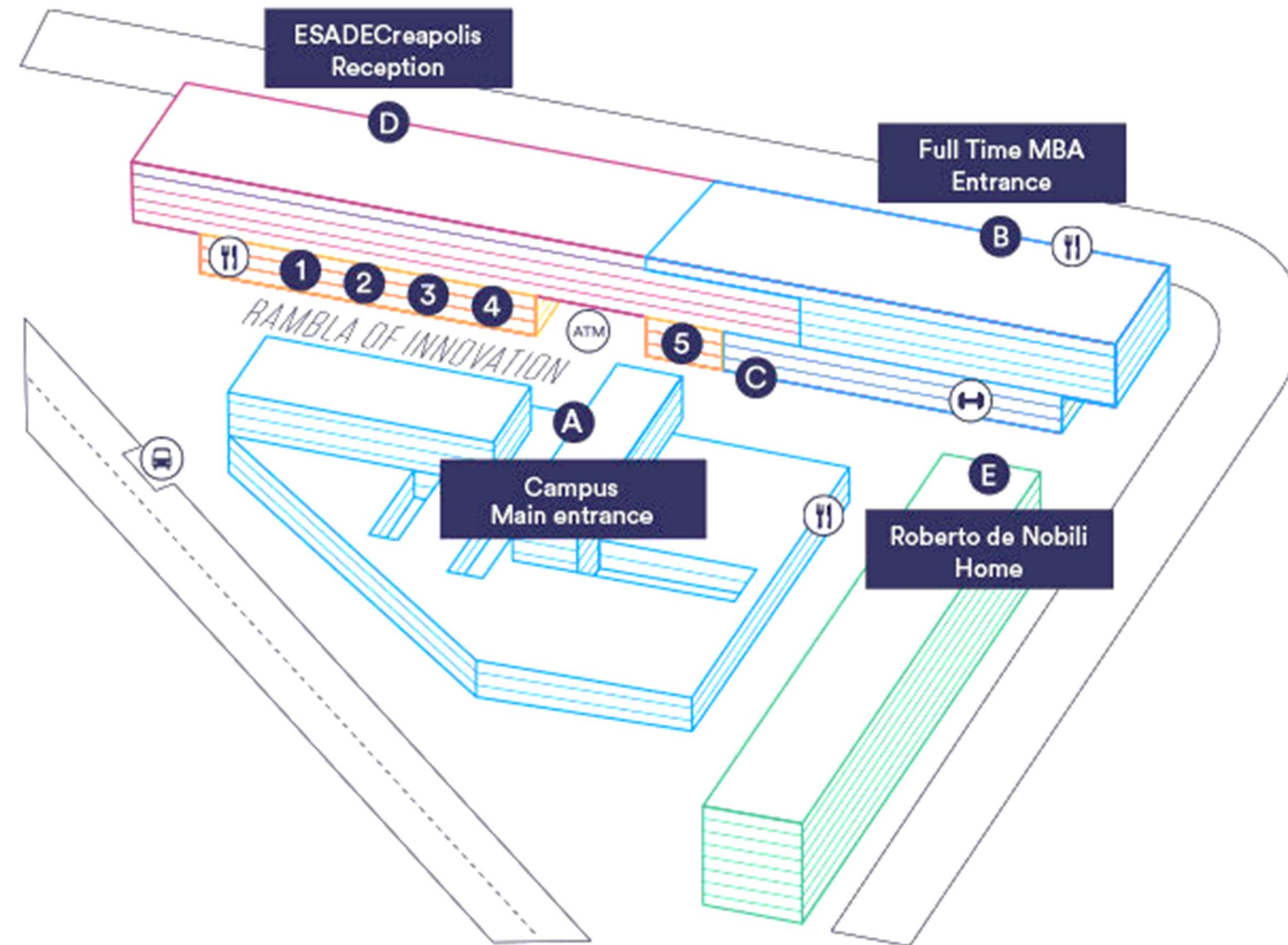
- A Campus building
- B Full Time MBA
- C ESADE Alumni

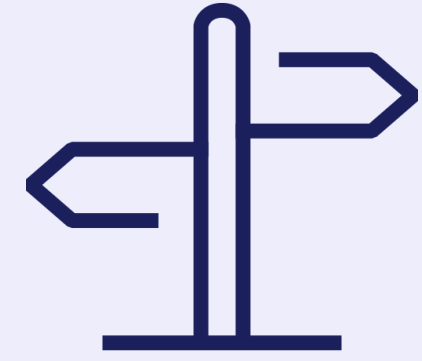
ESADECreapolis (Business Park)

- D Reception

Roberto de Nobili Home

- E Entry Hall





How to arrive?

From Barcelona to Sant Cugat:

Ferrocarrils de la Generalitat de Catalunya –

This is the recommended way to get to Sant Cugat.

Lines:

- S1 (Barcelona-Terrassa)
- S2 (Barcelona-Sabadell)

- Duration of journey: 25 mins from Pl. Catalunya and 15' from Sarrià.
- Frequency: every 5 mins.

From Sant Cugat Station to Esade Campus:

Walking: 15 mins

Bicycle: 5 mins

Bus: 10 mins

- Lines L1, L2 and L8.

esade

If you need accommodation...

Residencia Universitaria Roberto de Nobili (Sant Cugat)



Esade Summer School Team



Ferran Blanch

Academic director
Summer School



Inma Arenas

Executive director Summer
School



Patricia Mallol

Program Manager



Judith Arribas

Officer

esade

How can I apply?

Info sessions about admissions and registration procedures
will be carried out by
Cattolica Sacro Cuore International team very soon.
Stay tuned!

esade

Q & A



Av. Torre Blanca, 59
08172 Sant Cugat
(Barcelona)



summerschool@esade.edu



[Website](#)

esade

Thank you!

Do Good. Do Better.

esade

Do Good. Do Better.